

## TECHNICAL DESCRIPTION



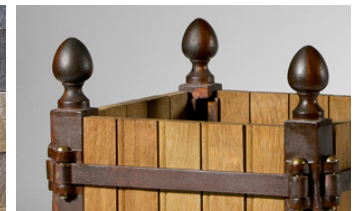
### THE AUTHENTIC CHÂTEAU DE VERSAILLES® PLANTER



Often copied, never equaled, the authentic Jardins du Roi Soleil planter is produced in France **under an exclusive license from the Établissement Public du Château, du Musée et du Domaine National de Versailles**. Built in cast iron from France with solid oak panels carefully selected in France and naturally dried, it is distinguished by the quality of its assembly and its finishes. Its aesthetic sublimates the most beautiful sites in more than 40 countries around the world. Durable and timeless, it makes your gardens and monuments unique place. Their entirely French manufacture gives them a guarantee of origin, authenticity, and

quality.

Jardins du Roi Soleil also offers **benches in naturally dried solid oak**, handcrafted in France, from the forests of the Center and Burgundy regions, as well as **bronze vases from the park of Versailles**, made and patinated in purest tradition of French craftsmanship. Finally, Jardins du Roi Soleil creates custom-made park and garden ornament at the request of customers and their landscape architects.



## WHO ARE WE?

The history of the Jardins du Roi Soleil (Sun King's Gardens) may have started with the "Château de Versailles®" tree box, but nowadays extends over the whole sphere of garden furniture and garden ornament: Classic designs of tree boxes, but also benches and urns...

Jardins du Roi Soleil manufactures, orange tree-boxes, patented garden boxes adapted from models created by landscape gardener André Le Nôtre for the «Château de Versailles» in the 17th century, under an exclusive brand licence, the «Château de Versailles®», giving all these products a guarantee of origin, authenticity and quality. We now offer a new range of items adapted from the Versailles garden furniture like solid oak benches - Marie-Antoinette®, Penthièvre® et Trianon® - and stone or bronze garden vases.



But beyond this historical heritage that has survived the centuries, JARDINS DU ROI SOLEIL works with various partners to imagine French-style garden furniture for the 21st century. Thus, a collaboration is underway with ENSCI, the National School of Industrial Creation, whose students work on projects combining contemporary creation and French heritage.

## THE ANDRE LE NÔTRE ORANGE PLANTER

The famous "Château de Versailles®" orange planter was adapted from André Le Nôtre 1670 wooden crates.

The 1500 orange planters that are used today by the Château de Versailles Orangerie's gardeners are horticultural tools of great ingenuity. Close collaboration with the gardeners allowed to bring this model the technical improvements that all the owners of unique, often imitated but never equaled product.

Under the same exclusive license, we also developed oak wood benches inspired by the historical Château de Versailles ones and stone or bronze urns that decorate the lawn and paths of the Park. These benches designed by Pierre-André Lablaude, according to the original prints from the 17th and 18th century, to decorate the park of Versailles and the trianon gardens.

Jardins du Roi Soleil also publishes two models of bronze vases designed by Claude Ballin in 1665 and a model of vase in Savonnières stone. They are found around the terrace and on the north parterre.

This high-end product range is the only one in the world with the "Château de Versailles" trademark. The authenticity is guaranteed and acknowledged by the greatest gardeners and landscapers of our times. It offers a unique signature to the most beautiful sites, parks and gardens.

## « CHÂTEAU DE VERSAILLES » PLANTERS

The structure is composed of a **cast iron frame** and 4 solid oak panels. The set weighs from 75 kg (165 lbs) to 1250 kg (2750 lbs) depending on the model (Eight different sizes from 500 x 500 mm to 1500 x 1500 mm).



### MANUFACTURING:

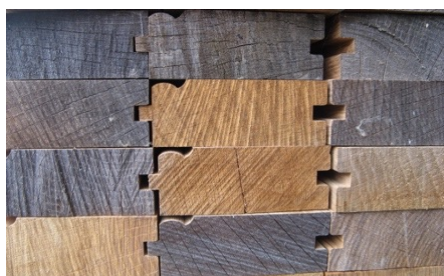
**MASSIVE OAK**  
Of French origin

**MELTING**  
Cast in an Alsatian foundry to obtain an unalterable structure that can last up to 150 years.

**ANTI-RUST TREATMENT**  
By cataphoresis for optimal protection

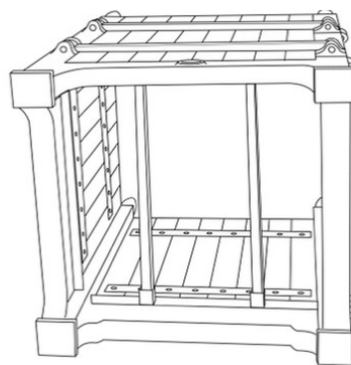
**PAINT**  
Three coats of microporous paint

Box dimension	Free height under box	Height of the balls	Total height	Weight	Wooden slats
500 x 500 mm	120 mm 4,72 in	120 mm 4,72 in	740 mm 29,13 in	75 kg	Galvanized duckboard
600 x 600 mm	120 mm 4,72 in	120 mm 4,72	840 mm 33,07 in	120 kg	4
700 x 700 mm	140 mm 5,51 in	130 mm 5,11 in	970 mm 38,18 in	170 kg	5
800 x 800 mm	150 mm 5,90 in	130 mm 5,11 in	1080 mm 42,51in	240 kg	6
900 x 900 mm	180 mm 7,08 in	130 mm 5,11 in	1210 mm 47,63 in	285 kg	7
1000 x 1000 mm	200 mm 7,87 in	180 mm 7,08 in	1380 mm 54,33 in	365 kg	8
1200 x 1200 mm	240 mm 9,44 in	180 mm 7,08 in	1620 mm 63,77 in	720 kg	10
1500 x 1500 mm	350 mm 13,77 in	280 mm 11,02 in	2110 m 83,07 in	1250 kg	13



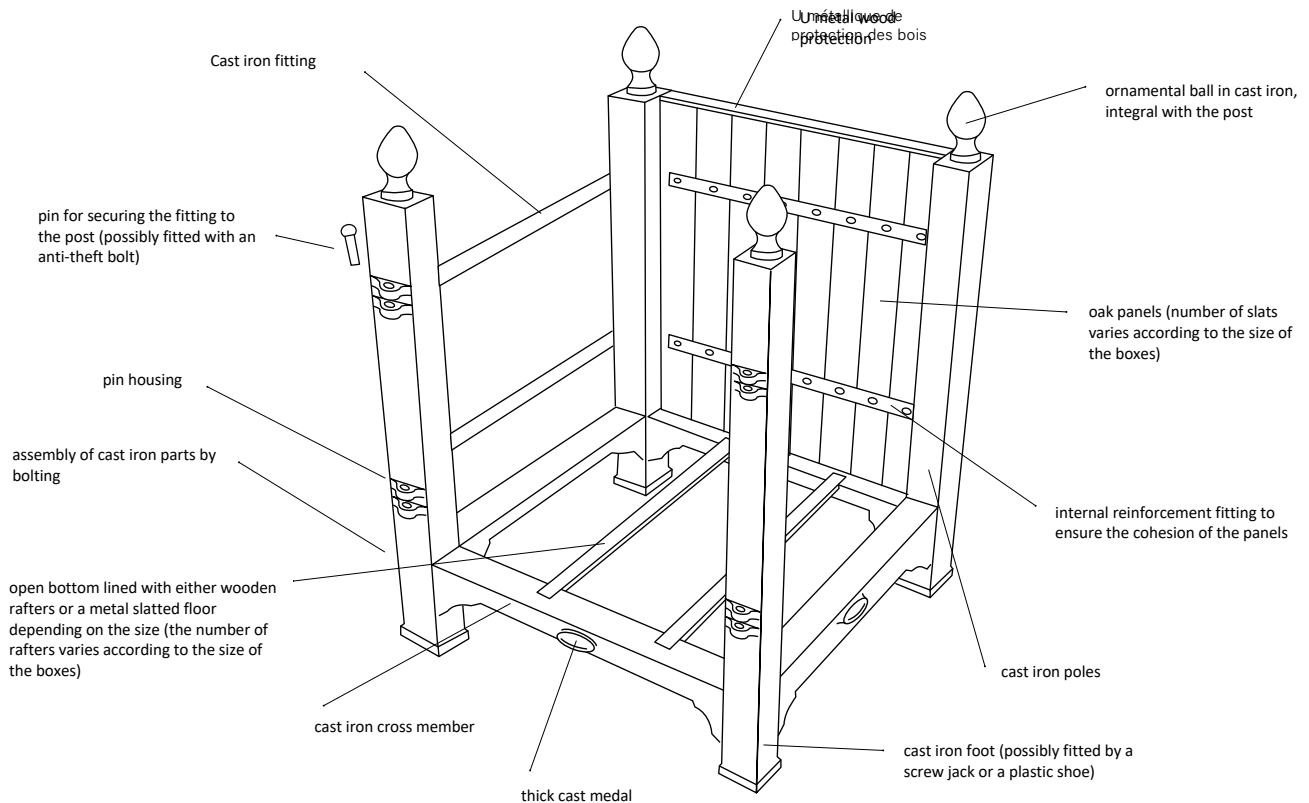


Interior top view



Interior view from below

### Schematic diagram of the interior





**Rust protection** is provided by a **cataphoresis** treatment bringing optimal durability.





The low sleepers receive two medals bearing the year of manufacture and two others bearing the stamp of the Palace of Versailles. Two of them are customizable on demand.

**The panels** are made of **red oak**. This species of wood present in the central region comes exclusively from sustainably managed forests and has the technical characteristics imposed historically.

This wood has not undergone any chemical treatment. Between sawing and shaping (or planing) it has gone through different phases, in particular a **drying in the open air for several years**, completed at the end of the process by a passage in slow dryer for about a month. This process prevents splitting of the wood.

When all the wood components are prepared, they are assembled using a rustproof treated flat iron and galvanized screws.

The top of the panels has a stainless aluminum profile that protects them from the elements.



The paint is a microporous flexible polyurethane spray applied in **three thin coats** crossed over a polyurethane primer, so it will last without risk of fading away. The thin layers allow the veining of the wood to appear slightly to avoid an artificial appearance and remain flexible to adapt to the breathing of the wood.

The oak wood we use will live with variations in humidity. Covering with too thick shell of paint would give a less natural look and would produce cracks in the paint because the humidity in the wood will vary.

The boxes are offered in a range of twelve basic colors, including the historic color Versailles green, suitable for most environments to facilitate the choices of our customers.

However, this range is not restrictive: Jardins du Roi Soleil responds to any request for customization, whether it is to use an RAL reference, to match an original color, or to create natural oil treatment.



BLANC



PAPYRUS



NOIR



SOIE



AMANDE



VERSAILLES



PROVENCE



PIGEON



OLIVE



IVOIRE



VAUBAN



CITROUILLE

## Caisses à Oranger Château de Versailles®

NUANCIERS



## Options

Jardins du Roi soleil offers different technical and customization options.

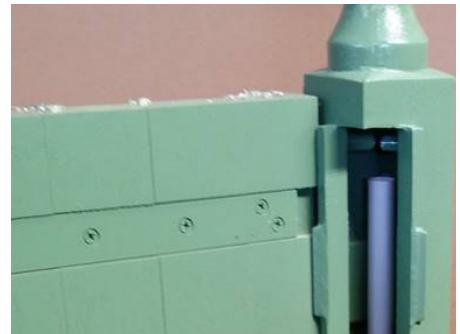


### Wheels

The orange tree box is fitted with 2 fixed roulettes with brakes and 2 swivel roulettes mounted on a steel frame under the planter.

### Irrigation

We install a rigid sheath hidden in the foot to allow the passage of your irrigation cable.



### Electrification

We install a rigid sheath hidden in the foot with the passage of an electric cable that comes out above and below to allow the connection of your lights.



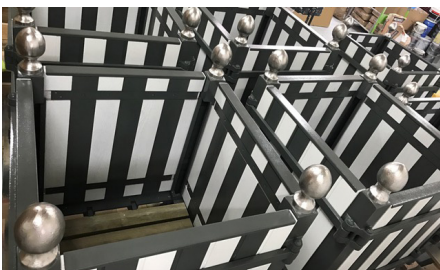
### Light slope and protection wedge

We offer shims painted in the color of the planter to make up for differences in ground level in complete discretion.



### Unique paint

We respond to any request for customization, use of your RAL reference or color match.

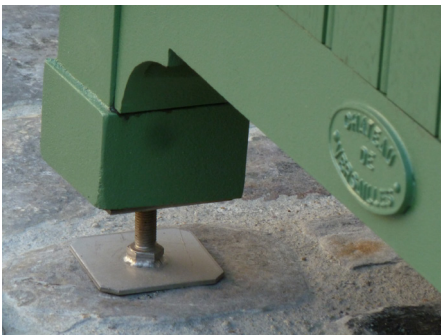




## Options

### Internal tray

Our galvanized steel bins are equipped with lifting hooks.



### Adjustable feet

Allows for an upgrade of the crate.

### Gold patina

Gold paint with a patina finish.



### Personalized medal

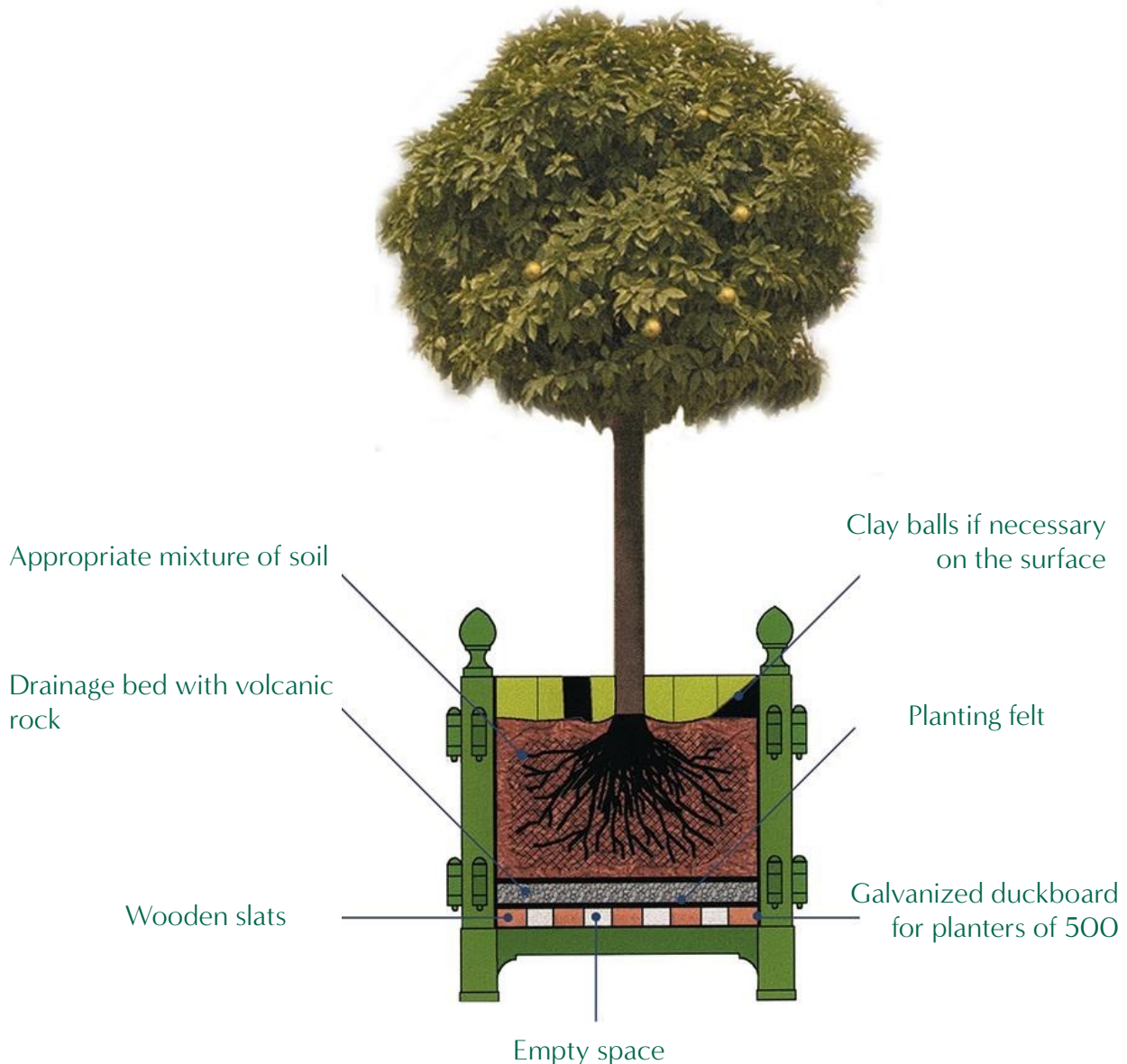
We can personalize a medal with your logo, coat of arms, acronym or arms.

### Internal tray tap

Located on the internal tray, under the planter, it allows to control the evacuation of excess water.



In the absence of a bottom and internal tank, the **recovery of plants** is favored by better **drainage** and good aeration of the earthy mixture. The four side panels are removable, giving **direct access to the root ball** and thus allowing the necessary care of the roots. This makes it easier to unpot / repot the plants. The box of 500 has a galvanized steel grating at the bottom, all the other sizes are fitted with wooden rafters

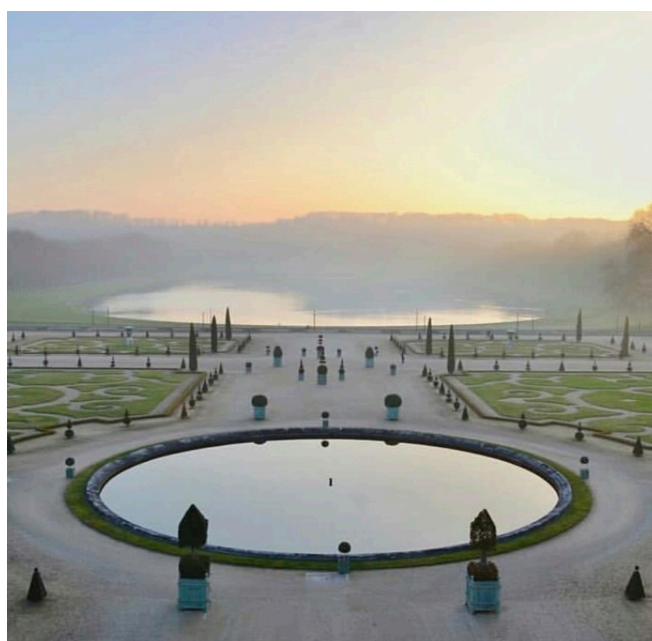
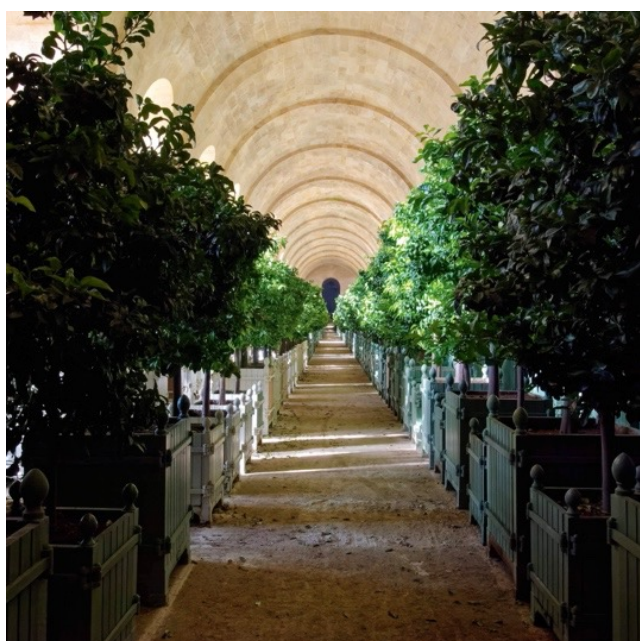


The boxes are delivered fully **assembled in individual packaging** and are supplied with a three-part **geotextile felt**.



When placing the plants:

- In the bottom of the crate, above the rafters / gratings and the drainage bed, two planting felts crossed one above the other (supplied) will be placed.
- The drainage bed itself having been previously placed over a third felt (also supplied) to allow good filtration of the water.
- Finally, everything will be covered with a mixture of soil which must be light and filtering to surround the roots. The mixture can be composed of 60% compost, 20% blond peat, 10% river sand and 10% crushed pozzolana.



## MAINTENANCE

The quality of the materials - cast iron and oak from the best French origine - and of the assembly as well as their weight are unequaled and allow use in public places.

The care in manufacture, the materials used and the various protection operations ensure an optimal lifespan : more than 150 years for the structure and at least 15 to 20 years for the wooden panels when properly maintained.



It is recommended for an optimal conservation of the latter to carry out brushing and repainting every 5 years.

For old planters whose wood would have suffered from a lack of maintenance and require replacement, Jardins du Roi Soleil offers Renovation Kits including wooden panels painted in your colors or in ready-to-paint primer, the U in aluminum to protect the panels, the pins with polyamide protection joints, a set of wooden slats for the bottom of the planter, and a set of geotextile felts.

